

# Model Y EVSE-EV Charger Private/Semi-Public Use

---



Wall Mounted



Easy Installation



Status Screen



WiFi / RFID



White & Black



Tethered Cable

## User Interface

<b>Connectivity</b>	WiFi / RFID.
<b>User Identification</b>	HNE Software Application.
<b>Information Display</b>	HNE Application, and OLED Status Screen.
<b>Color</b>	White / Black

## Technical Datasheet

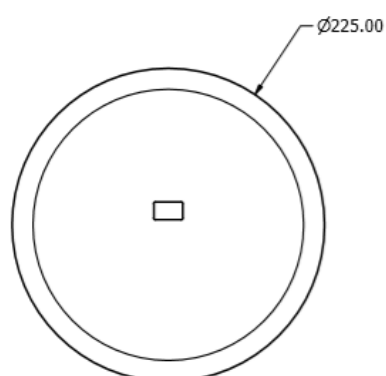
### General Specifications

Model	Charging Mode	Dimensions	Weight	Standards
Y	Mode 3	ø225mm X 80mm	1.25 kg	IEC 61851-1 IEC 61851-22

### Electrical Specifications

<b>Charging Power</b>	7.4 kW	11 kW	22 kW
<b>Rated Voltage</b>	220-240 V	380-400 V	380-400 V
<b>Rated Current</b>	32 A (1Ph)	16 A (3Ph)	32 A (3Ph)
<b>Rated Frequency</b>	50/60 Hz	50/60 Hz	50/60 Hz
<b>GFCI</b>	25 mA	-	-
<b>Connector Type</b>	Type 2-GB/T Plug		
<b>Protection Rating</b>	IP 54		
<b>RCD</b>	External RCD Required		

### Dimensions



### Part Number

Model	Code	Rated Power
Y	1	7.4 kW
Y	2	11 kW
Y	3	22 kW